

“Welcome home”
STARTS WITH YOU



THE
BRIDGE
YOUTH RESOURCE CENTRE



ABOUT US

The Bridge Youth Resource is a youth serving organization for individuals ages 14-24 where programming in collaboration with partners centres around education and job support, mental health and addiction services, life and coping skills, and social inclusion activities.

SLEEPINGOUT FOR



& THE GIVING SPOON





OUR YOUTH

The facility also has support for those experiencing homelessness or housing instability through The Quiring Family Fresh Start supportive housing facility for youth ages 16-24.





WHAT IS THE PROBLEM?

- 47% of renters in Windsor-Essex are spending 30% or more on rent, meaning they are living in a house that is not affordable to them.
- Households with incomes below \$23,990 are priced out of the rental market.
- 19% of homeless that access the service system are youth ages 16-24. There are no other youth focused housing options in this area.

WHAT CAN WE DO?

To fill the current housing gap and account for population growth and changes, Windsor-Essex would need 12,900 additional affordable rental housing units by 2028.

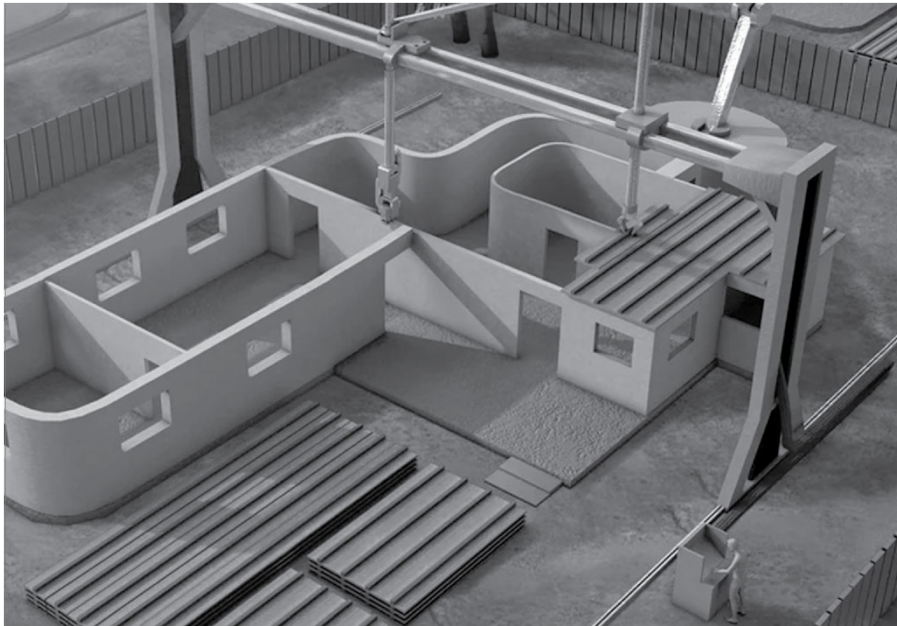


PHASE 3



PHASE 3

Imaging also reflects the completion of Phase Two, The Quiring Family Fresh Start Housing Facility.



BE A PART OF *HISTORY*

We have partnered with Habitat for Humanity and built 4 as 3D-printed homes for our community. These homes are the **first in Canada!**

One of the goals was to design 3D-printed homes that meet residential building code requirements and produce landmark precedents for future practices in **cost-effective and environmentally sustainable home construction.**

DONORS-TIER 3:

\$100,000

THE ESTATE OF
IRENE CLARK

UNI-FAB

**THE RYAN FRIESEN
TAILGATE EVENT**

DONORS-TIER 4:

\$50,000



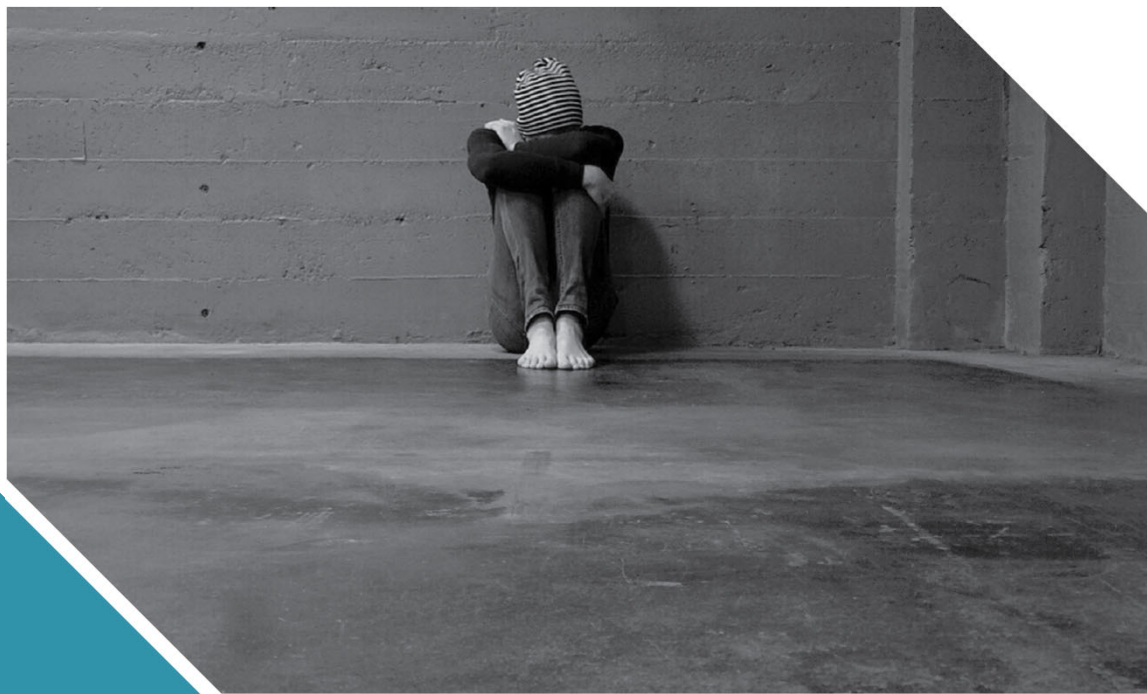
DONORS-TIER 5:

\$25,000



"Welcome Home"

CAN LITERALLY START WITH YOU.

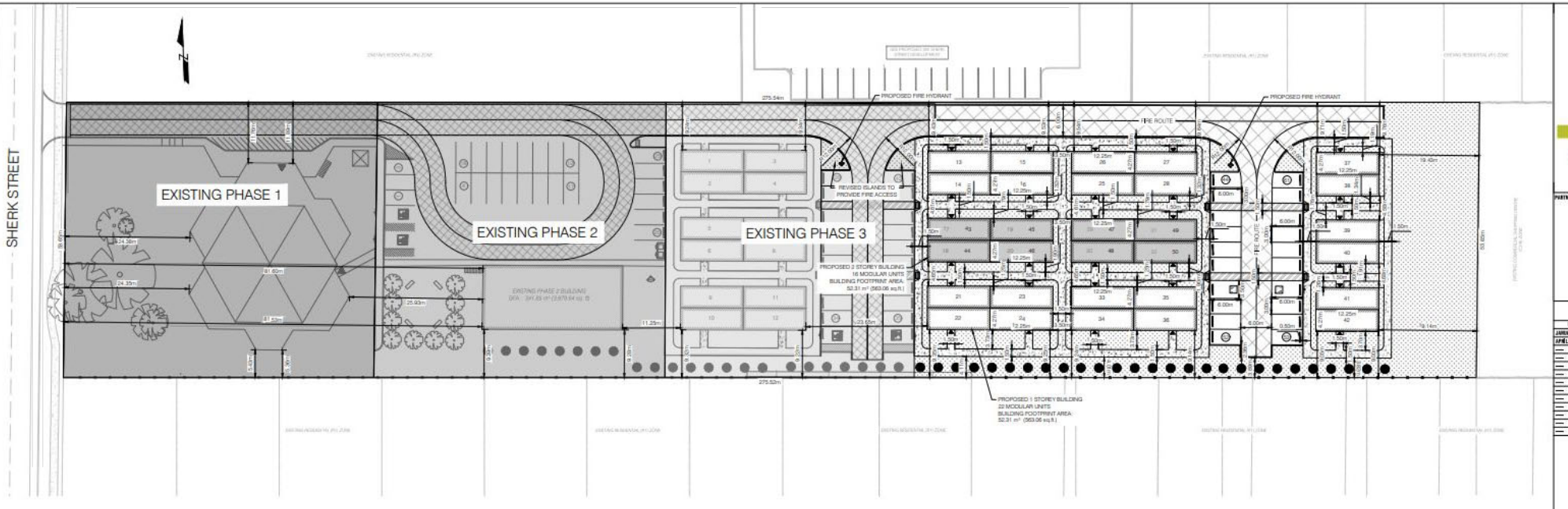


We need your help to start addressing these issues around housing and homelessness.

We want to build a safe and inclusive community that would have affordable, mid-level and market rate options.

With your help, you would not only be supporting our organization, but the community as a whole.

PHASE 4



THIS PROJECT IS ESTIMATED TO BE

★ **APPROX. 11M** ★

WE ARE SEEKING SUPPORT AT THE



**MUNICIPAL
LEVEL**



**REGIONAL
LEVEL**



**PROVINCIAL
LEVEL**



**FEDERAL
LEVEL**



**PRIVATE
FUNDERS**



**THE ASK FROM
THE COUNTY OF ESSEX:**

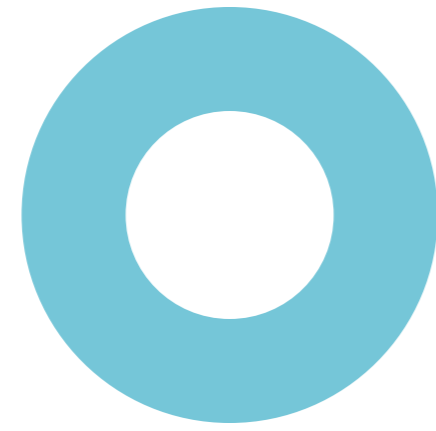
★ **2M** ★

**DEDICATED TO
THE PROJECT**

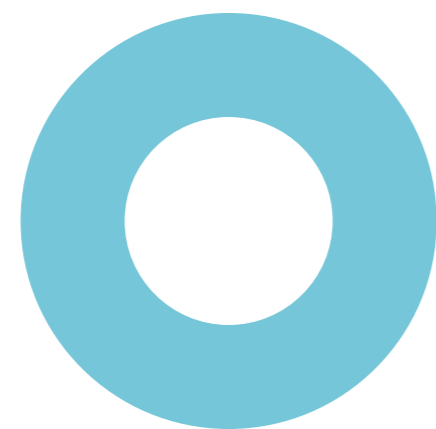
**IN TOTAL WE WILL
HAVE ALMOST 50%
OF OUR
DEVELOPMENT AS
AFFORDABLE
HOUSING, WHICH IS
OVER DOUBLE THE
MINIMUM TARGET OF
20% WITHIN ALL NEW
DEVELOPMENT
DEFINED BY THE
COUNTY OF ESSEX
OFFICIAL PLAN**

THE 2 M WILL BE DEDICATED TO:

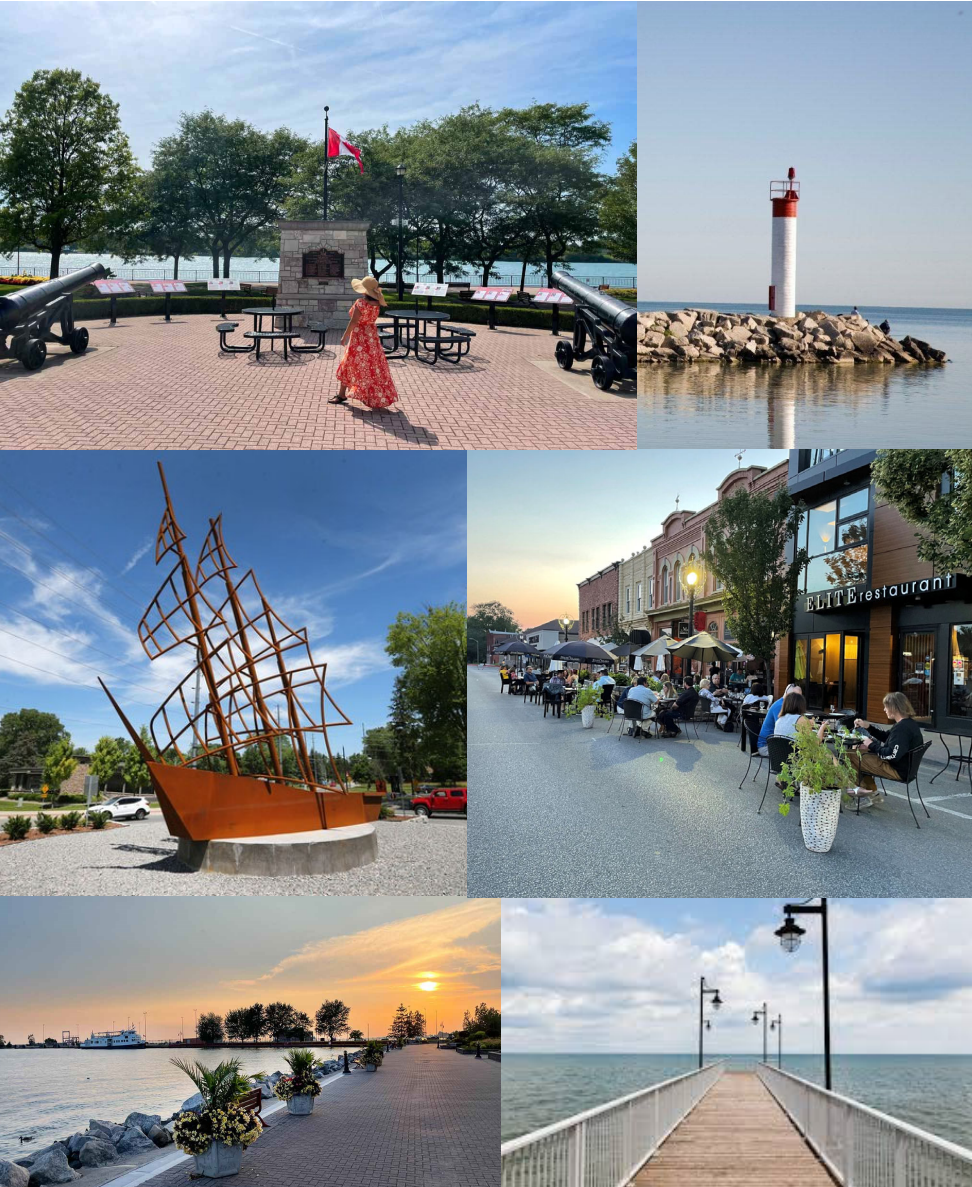
-  **DEVELOPMENT START-UP COSTS INCLUDING SURVEYS, REQUIRED REPORTS FOR GRANTS, ETC.**
-  **INFRASTRUCTURE**



THE BRIDGE WILL BE REQUIRED TO RAISE 5M AT MINIMUM TO ENSURE THE VIABILITY OF THE PROJECT IN ORDER TO SEE AN ANNUAL SURPLUS OF DOLLARS FOR SUSTAINING OPERATIONS BASED ON OUR PROJECTED DEFICITS



THE GOAL IS TO APPLY TO THE FEDERAL CO-INVESTMENT FUND TO SUPPORT THE REMAINING 6M, ALONG WITH THE OTHER OPPORTUNITIES AS PREVIOUSLY IDENTIFIED TO LAYER FUNDING



FUTURE IMPACTS



HELP THE BRIDGE IN ITS PATH TO SELF-SUSTAINABILITY AS A YOUTH COUNTY RESOURCE



CREATE HOMES IN THE COUNTY TO ASSIST WITH ADDRESSING THE LOCAL HOUSING CRISIS



AS WE DEVELOP OUR NEXT STRATEGIC PLAN, WE WILL LOOK TO HOW WE CAN BEST SUPPORT THE REGION MOVING FORWARD WITH THE POTENTIAL OF EXPANDED YOUTH SERVICES