



Administrative Report

Office of the Manager, Transportation Planning and Development

To: Warden MacDonald and Members of Essex County Council

From: Jerry Behl, P.Eng.
Manager, Transportation Planning and Development

Date: Wednesday, March 01, 2023

Subject: Community Safety Zone in the Hamlet of Gesto

Report #: 2023-0301-IPS-R04-JB

Purpose

The purpose of this report is to provide information on a review of safety on County Road 12 in the Hamlet of Gesto in the Town of Essex.

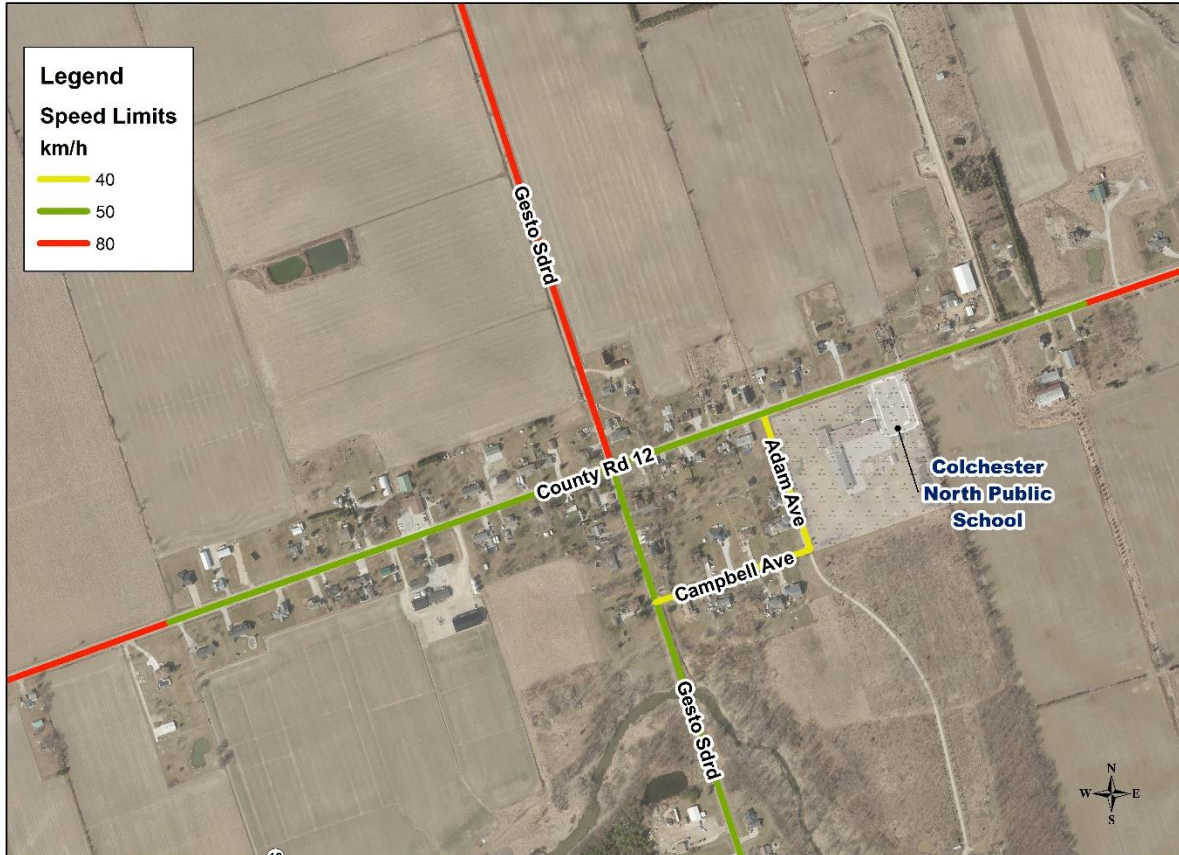
Background

The County received requests from the Town of Essex for a community safety zone or school zone to be considered in the area around the Hamlet of Gesto. The study area is on County Road 12 known locally as Malden Road, and includes Colchester North Public School. (please refer to **Figure 1**)

Discussion

Infrastructure & Planning Department staff completed a review of the roadway characteristics, including measurables such as daily traffic volume, vehicle operating speed, pedestrian volumes, and collision history to determine whether this location would benefit from being designated as a community safety zone or school safety zone.

Figure 1 - Posted speeds in the area.



Traffic data was collected on County Road 12 east of Adam Avenue.

- The traffic volume was 1062 vehicles per day
- Truck volume was low
- The speed of vehicles was 69 km/h (calculated 85th percentile speed). The posted speed limit is 50km
- Collision history showed no pedestrians or cyclists between 2014 and 2021




Staff visited the location to check on the operation of school pick up and drop off. Discussions with the School Principal also took place. The review indicated that the majority of students travel by bus, and some are dropped off by parents. Very few students walk to school.

Options considered by Administration were:

1. No change. A school area is currently designated around the school
2. A School Zone
3. A Community Safety Zone

The difference between a school “area” and a school “zone” is that a school area has regular school signs (please refer to Table 1) while a school zone has enhanced signage and a reduced speed limit. Both a community safety zone and a school zone have increased fines for speeding.

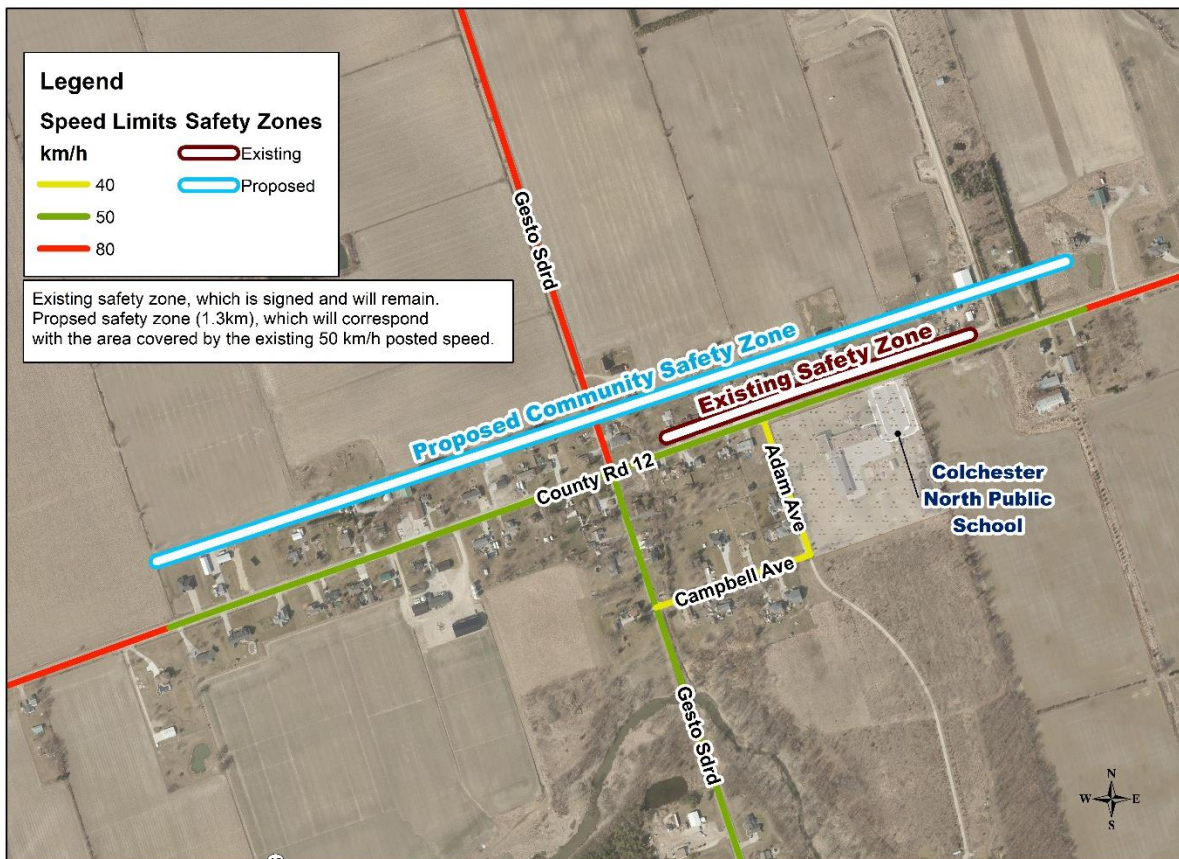
Table 1 – Types of Signage

Type of Sign	Sign Example
School Area	
School Zone	
Community Safety Zone	

An analysis was carried out according to Transportation Association of Canada guidelines. The analysis indicated that a school area or a school zone are appropriate for this school site. The issue in the Gesto area seems to be

drivers not complying with the posted speed of 50 km/hr. Therefore, and in consideration of the analysis, options and area specific needs, Administration recommends a community safety zone (please refer to Figure 2).

Figure 2 - Proposed Community Safety Zone



A community safety zone will reinforce the existing posted speed and speeding fines will be increased. The introduction of a community safety zone will increase compliance with the posted speed limit. The area covered by the community safety zone will be larger than that which would be covered by a school zone. The hours of operation of a school zone are normally school hours whereas a Community Safety Zone is in effect 24 hours per day, 7 days per week, January to December. Students who walk to school and the community will benefit from a community safety zone and greater compliance with the speed limit. The school area signs will remain in place.

This is an engineering remedy which will help increase compliance with the posted speed. Other aspects of a solution include enforcement and education.

Financial Implications

The cost of implementing the recommended measures is under \$5,000 and can be managed within the approved Intersection Safety Improvement budget, should County Council wish to proceed. The measures can be implemented within two months.

Consultations

During the report writing process the following were consulted:

- Kevin Girard, Director of Engineering, Town of Essex
- Heidi Horn-Olivito, Principal, Colchester North Public School
- Ontario Provincial Police

Recommendation

That Essex County Council adopt By-Law number 2023-09 to amend By-law 26-2002 (A By-Law to regulate traffic and parking on highways within the Essex County Roads System), amending Schedule I, designating Community Safety Zones, by adding a Community Safety Zone, in the Hamlet of Gesto, in the Town of Essex, along County Road 12 from 620m west of Gesto Sideroad to 620m east of Gesto Sideroad, and will be in effect 24 hours per day, 7 days per week, January to December.

Approvals

Respectfully Submitted,

Jerry Behl

Jerry Behl, P.Eng., Manager, Transportation Planning and Development

Concurred With,

Allan Botham

Allan Botham, P.Eng., Director, Infrastructure and Planning Services

Concurred With,

Mary Birch

Mary Birch, B.A., CMO, Interim Chief Administrative Officer

Appendix Number	Title
Appendix I	Schedule 'I' to By-Law number 2023-09 to amend By-law 26-2002