



Administrative Report

Office of the Manager, Transportation Planning and Development

To: Warden McNamara and Members of Essex County Council

From: Jerry Behl, P.Eng.
Manager, Transportation Planning and Development

Date: Wednesday, March 16, 2022

Subject: County Road 22 Update Corridor Study Update –
County Road 25 to West Belle River Road

Report #: 2022-0316-ISD-R08-JB

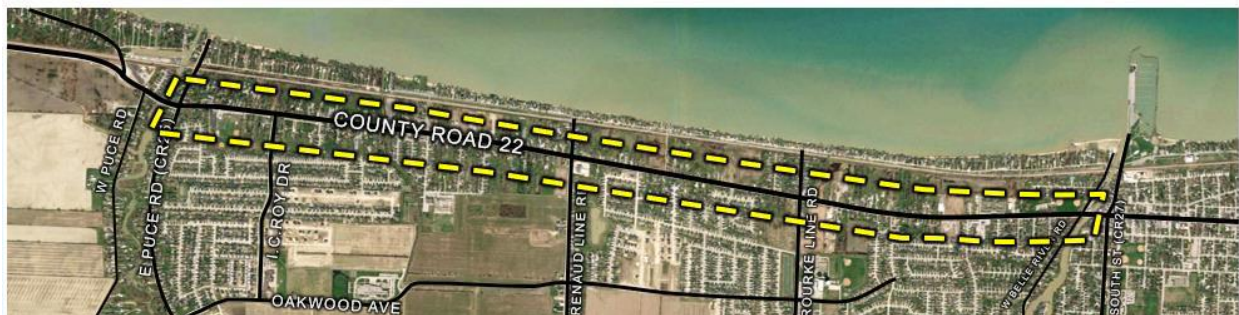
Purpose

The purpose of this report is to provide County Council information pertaining to the County Road 22 Corridor Alternative Strategies Study.

Background

The County of Essex and the Municipality of Lakeshore have contracted WSP to conduct an Alternatives and Strategies Study for the County Road 22 corridor through the Municipality of Lakeshore. The study area is a 5.8 km section of County Road 22 from CR 25 (East Puce Road) to West Belle River Road. The study area is shown in figure 1.

Study Area Figure 1



The Study builds upon and tries to balance the work completed in the following:

- The 2006, Environmental Assessment on County Road 22 from East Puce Road to Belle River Road.
- The 2012 Town of Lakeshore Corridor Transformation Strategy – CR 22 Special Planning Area Design Guidelines.
- The 2012 County Wide Active Transportation Systems (CWATS) Master Plan.

The County Road 22 Alternatives and Strategies Study has reviewed alternative approaches to transportation and roadway design. The goal was to plan for future growth and maintain a safe, convenient and comfortable corridor for travel by all users of all road users.

The guiding principles for this study were:

- Establish guidelines for safe, convenient and comfortable movement of goods and people including access management;
- Utilize the adjacent local roads to maintain an acceptable level of service;
- Provide an integrated framework for operational (road) and urban design (boulevard) components that can adapt to a variety of conditions;
- Enhance, promote and integrate sustainable and active transportation.
- The specific goals of the study are to provide a design that manages to:
 - Accommodate expected future growth, targeting the 2031 planning horizon;
 - Improve traffic operations on the County Road 22 corridor;
 - Accommodate vehicular (including provisions for future transit), pedestrian and cyclist traffic;
 - Improve safety for all road users;
 - Reduce the number of accesses to County Road 22 in order to support the desired “built form” envisioned by the Corridor Transformation Strategy;
 - Improve streetscaping to enhance the visual appeal, encourage active transportation and strengthen the sense of community.

Discussion

The first opportunity for outreach and engagement was launched in December 2020 with the development and promotion of an online survey focused on gathering input from members of the public and key stakeholders. The purpose of the survey was to generate interest and collect feedback on corridor conditions, constraints and preferences for improvements.

The online survey was hosted from December 2020 to January 2021 and 514 responses were received. The most important improvements identified by respondents included:

- Improve roadway capacity, traffic operations and mobility.
- Strong support for access management along the corridor including the closure of several side roads should this improve efficiency and increase safety along County Road 22.
- Improvements to pedestrians, cycling and active transportation infrastructure.

Other key findings and general comments provided by respondents included:

- More opportunities for controlled crossing of the roadway.
- Desire for attractive and well-designed streetscape, improved streetlights and a higher density mixed-use corridor that will support transit.
- Enhance the active transportation experience by providing buffers between vehicle traffic and AT facilities, benches, bicycle parking and repair stations.

Upon completion of the first phase of the project, design alternatives were prepared and evaluated against the objectives and goals. These design alternatives were presented to the municipal Council in Lakeshore, Essex County Council and at a Public Information Centre (PIC) in June 2021. The PIC was attended by 61 people, and was subsequently posted to the project website, where it was viewed an additional 123 times.

During consultations for this phase of the project, members of the public were provided multiple avenues to provide feedback on the preferred design alternative. These avenues included:

- An Online Public Information Centre;
- An Online survey posted to the PlaceSpeak page shared by Essex County and the Municipality of Lakeshore;

- Letters delivered to residents along the affected corridors; and
- Emails to the project team.

When taken together, the results from rounds 1 and 2 of engagement for this project show that a majority of the community supported the proposed the preferred design alternative.

Concerns were expressed during the June PIC. The concerns raised were that the closure of side roads would result in increased speed and traffic volume on some streets. The Municipality of Lakeshore will be collecting speed and traffic volume data on local roads prior to any construction work taking place. The Municipality will also continue to monitor traffic to see if traffic calming on local roads is warranted.

The recommended design solution for County Road 22 was identified in the PIC as Alternative 2B. This design solution is shown in plan in Figure 2, with the cross section shown in Figure 3. This alternative includes a Multi-Use Path on the south side, as well as separated cycle tracks to support active transportation within the corridor. Alternative 2B also features wide boulevards to allow for enhanced streetscaping

Figure 2 Recommend Design Solution Plan

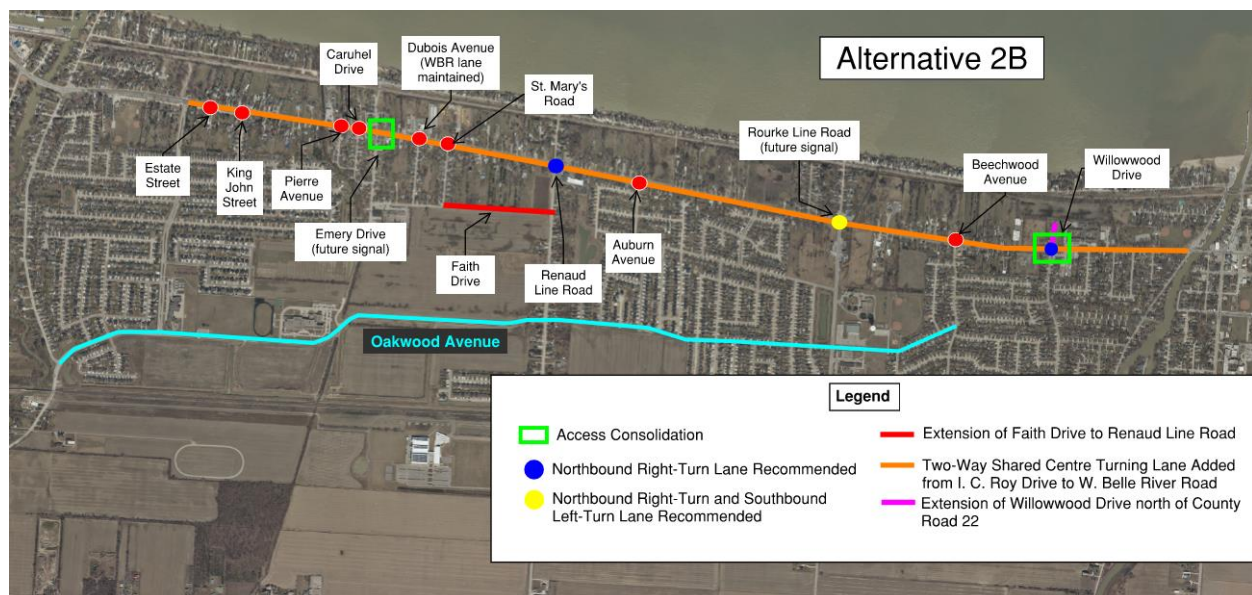
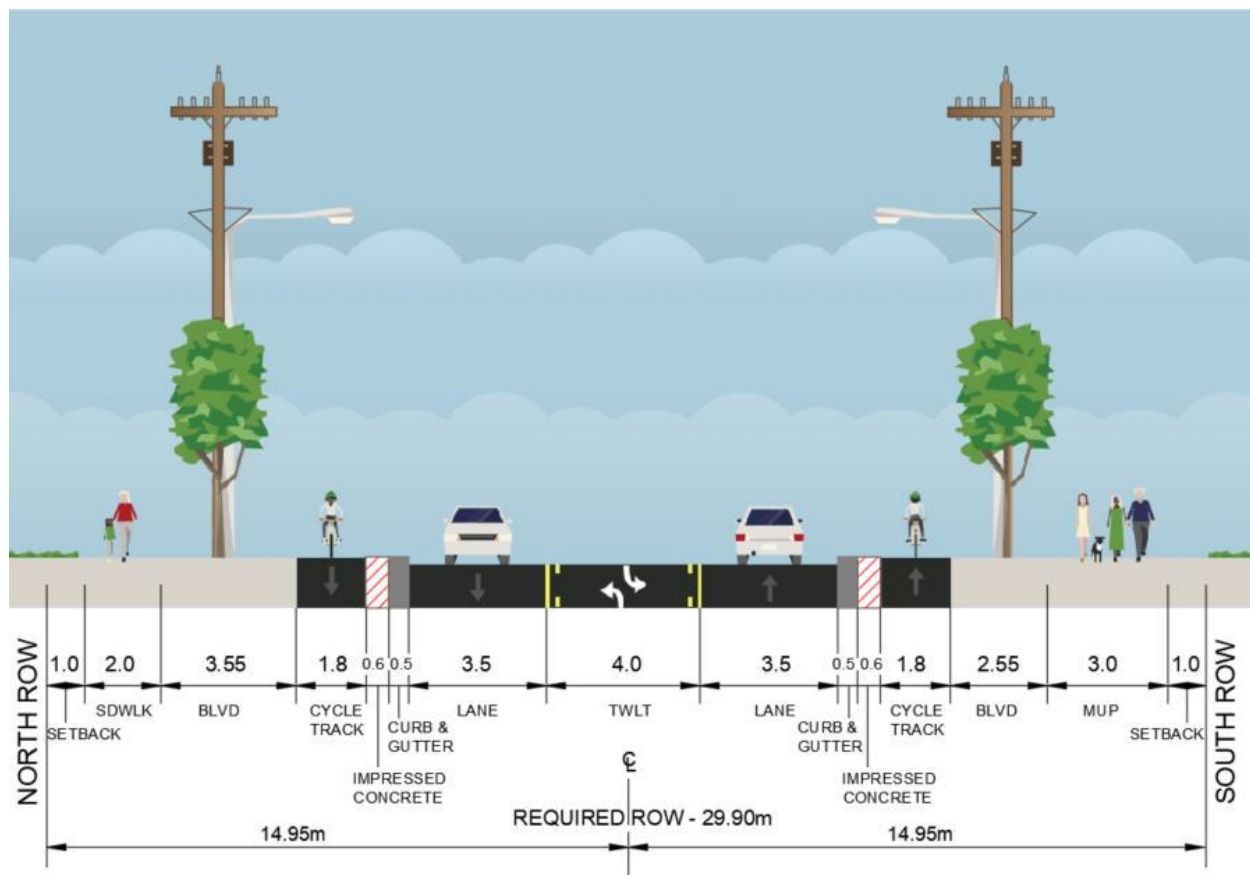


Figure 3 Recommend Design Solution Cross Section



Administration proposes to work with the Municipality of Lakeshore on the following Implementation Plan:

2022	Detailed Design
2022 - 2023	Installation of a traffic signal at Emery and closure of side roads.
2023 - 2024	Property Acquisition, Relocation of utilities and Environmental Approvals
2025	Construction from I.C. Roy Drive to Renaud Line Road
2026	Construction from Renaud Line Road to Rourke Line Road
2027	Construction from Rourke Line Road to West Belle River Road

Financial Implications

The 2022 Infrastructure Services, Roadway Expansion budget identifies \$1,000,000 for County Road 22 - IC Roy Drive and West Belle River Road (please refer to Table 1). Work in 2022 is limited to completion of the County Road 22 Corridor Study, detailed design of the entire corridor, installation of a traffic signal at Emery Drive and closure of the identified side roads.

This implementation is to be cost shared with the Municipality of Lakeshore according to County and regional policy. Detailed cost sharing will be presented for Council's consideration and approval in future reports regarding the award of various construction projects. Cost sharing for major components is presented in Table 2.

Table 1

Task	Estimate (Including Net HST)
Consulting & Engineering (IC Roy to West Belle River Road)	\$300,000
Construction (Traffic Signal at Emery Dr. and Road Closures Only)	\$700,000
Total	\$1,000,000

Table 2

Component	Cost Share
Roadworks on County Roads	100% County
Traffic Signals at County/Municipal intersections	50% County 50% Municipal
Sidewalks	100% Municipal
CWATS Facilities in Settlement Areas	40% County 60% Municipal

Consultations

The following consultations have taken place:

Phase I - Pre-Design in December 2020

- Public Online Survey

Phase II - Preferred Alternative in June 2021

- Public Information Centre
- Presentation to Lakeshore Municipal Council
- Presentation to Essex County Council

Recommendation

That Essex County Council receive report number 2022-0316-ISD-R08-JB, County Road 22 Corridor Study Update, as information.

Approvals

Respectfully Submitted,

J.Behl

Jerry Behl, P.Eng., Manager, Transportation Planning and Development

Concurred With,

Allan Botham

Allan Botham, P.Eng., Director, Infrastructure & Planning Services

Concurred With,

Mike Galloway

Mike Galloway, MBA, CMO, Chief Administrative Officer

Appendix Number	Title
Appendix A	County Road 22 Alternatives and Strategy Study
Appendix B	County Road 22 Presentation