

Windsor-Essex Regional Community Safety and Well-Being Plan

Essex County Council Presentation

Presentation Date: Wednesday, November 18th 2020

Presentation By: **Leonardo Gil**, Project Manager
City of Windsor



Overview

- Background
 - Legislative Requirements
 - CSWB Planning Framework
- Key Project Updates
 - Risk Factor Data Categories
 - Asset Mapping
- Project Methodologies
 - Consultation and Engagement Approaches
 - Enhanced Sector Network
 - Project Timelines



Background – Legislative Requirements

- The Province has legislated all municipalities under the *Police Services Act* to prepare and adopt a Community Safety and Well-Being (CSWB) Plan.
- In consideration of COVID-19, on April 14, 2020, the Province passed the *Coronavirus (COVID-19) Support and Protection Act, 2020* which allowed an extension to the submission deadline past January 1, 2021 to a date yet to be determined.
- **Additional legislative requirements related to CSWB planning include:**
 - Establishing a multi-sectoral advisory committee (must include 7 key sectors identified in the legislation);
 - Conducting consultations
- **Contents of the plan must include:**
 - Identifying priority risk factors;
 - Identifying strategies to reduce the prioritized risk factors (e.g. new services, changing or coordinating existing services);
 - Setting measurable outcomes

Background – CSWB Planning Framework

- CSWB Plans result in integrated approaches to service delivery that involve multi-sectoral partnerships to proactively address local priorities related to crime and complex social issues.
- The CSWB planning framework promotes upstream activities by focusing on social development, prevention, and risk intervention.
- CSWB Plans leverage and build upon existing efforts and partnerships and encourages the development of shared goals across sectors.
- Upon Council endorsement of the Plan, partners can work toward implementing shared goals and strategies.
- CSWB Plans are living documents which involve an ongoing process of issue identification and planning through continued collaboration with community organizations, leaders and residents.
- Ultimately, all members in a community are seen to have a role to play and as such, identified strategies must strive to be culturally and socially responsive.

Key Project Updates

Since the July 13th Council Report (CR337/2020), the following key steps have taken place:

- Finalization of revised project methodologies and timelines.
- Discussions with AMO and OMSSA representatives including a Province wide CSWB working group have been completed to assess the status of other municipalities as well as the provincial deadline.
 - Discussions have lead to a presumed deadline of December 31, 2021. As of the writing of this presentation a Provincial deadline has not yet been established.
- Finalization of Consulting Agreement. Consulting firm **StrategyCorp** has been successfully awarded the contract through a RFP.
- Presentation to Regional CAOs table to provide project updates.
- Re-engagement of the Data team has been completed to establish current state analysis data categories and indicators.
- Completion of an interactive Regional Asset Map developed in conjunction with the City of Windsor's Geomatics Department.
- First virtual Regional Systems Leadership Table meeting since the project pause is planned for September 29, 2020.

Key Project Update – Risk Factor Data Categories

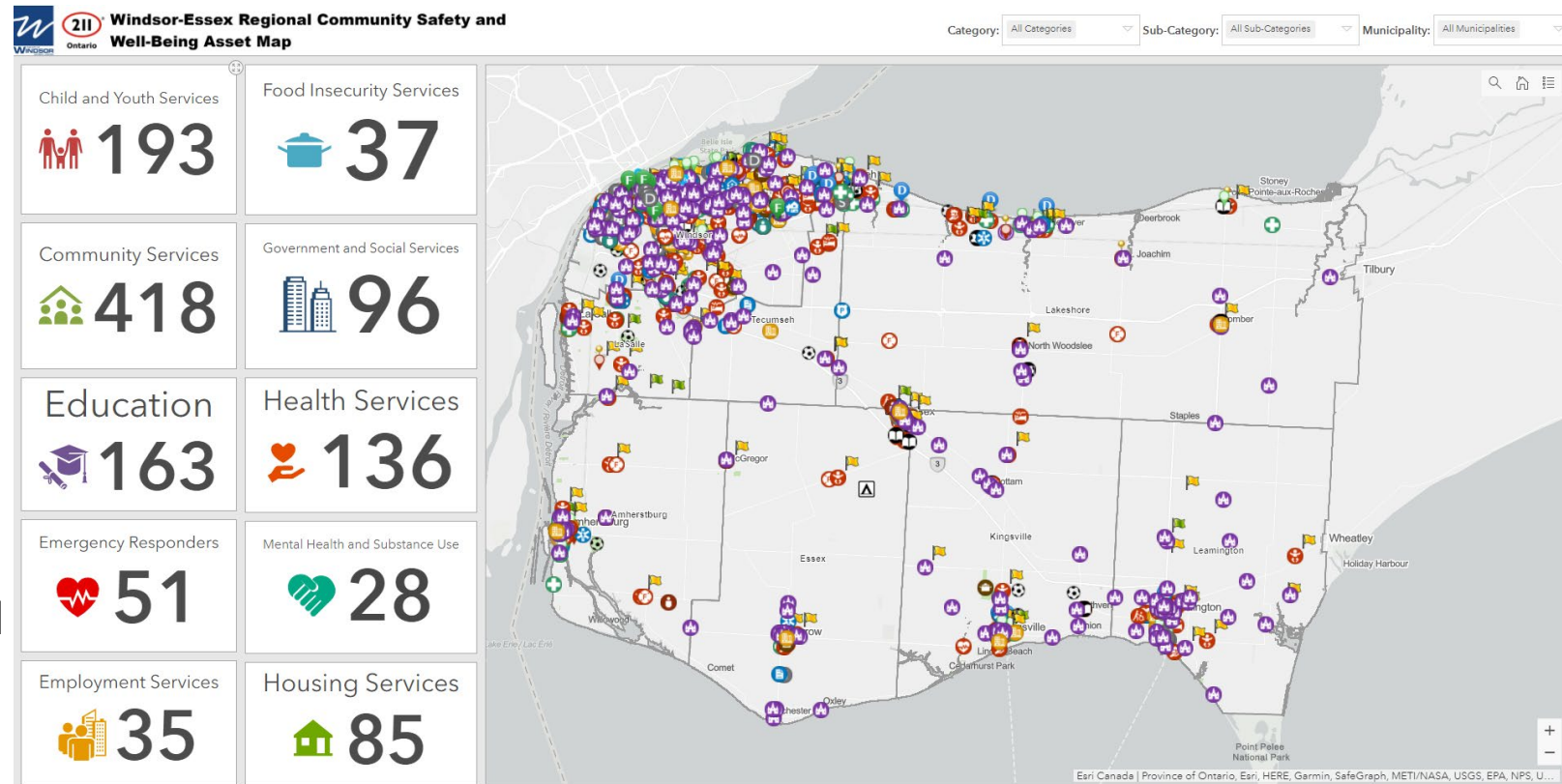
- Through research and in consultation with the Data Team, 21 risk and protective factor categories identified in the CSWB Framework were synthesized into the following 7 data categories.
 1. Crime and Victimization
 2. Education
 3. Financial Security
 4. Mental Health & Substance Use
 5. Physical Health
 6. Housing & Neighbourhoods
 - A. Housing
 - B. Environment
 7. Covid-19 Impact
 - A. Health
 - B. Economic
- Publicly available databases were used to identify indicators relevant to the seven categories.
- Data team members have been consulted through an online survey, group meeting and one-on-one meetings to finalize indicators for each category.
- These data categories and indicators will form the basis of the Current State Analysis as well as inform the development of the online survey.
- To support the Regional Systems Leadership Table in identifying and prioritizing local issues, qualitative approaches will be used throughout the consultation phase to contextualize data.

Asset Mapping

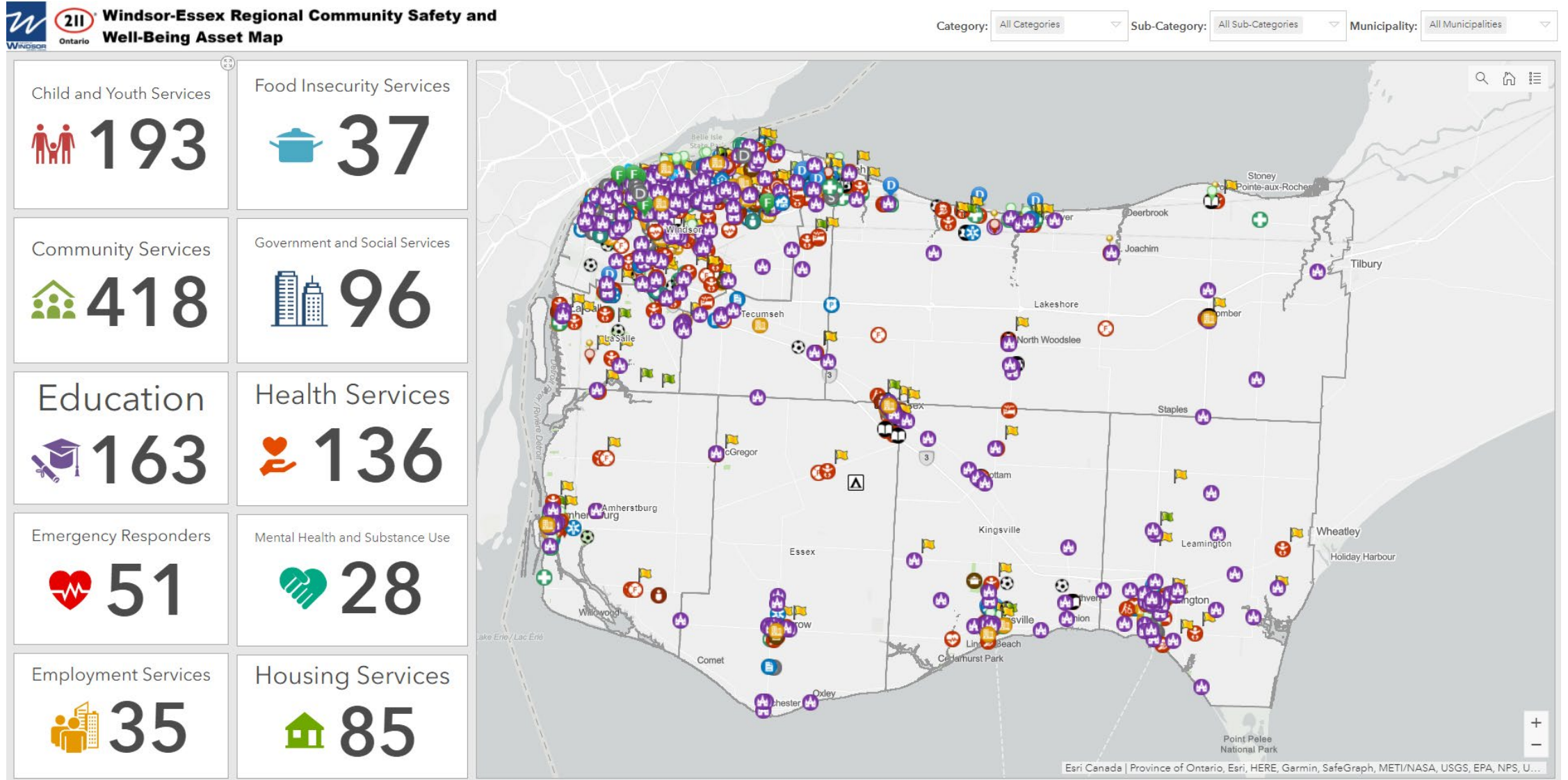
- Asset mapping within the Framework includes the following:
 - Existing Body Inventory:** Collating a list of existing committees and leadership bodies.
 - Strategy Inventory:** Establishing a list of existing strategies, plans and frameworks.
 - Asset Map:** Mapping community assets.

RCSWB Asset Map

- Completed in partnership with the City of Windsor's Geomatics Department.
- Assets were compiled in consultation with 211 and the County of Essex Geomatics department.
- Over 1,240 assets** were mapped throughout Windsor and Essex County.



Asset Mapping - Demonstration



Project Methodologies

- Consultation and Engagement Approach
- Enhance Sector Network
- Project Timeline

Consultation and Engagement Approach

- Due to considerations and restrictions related to COVID-19, an online engagement process will be used.
- Dial in options and CSWB Tool Kits which include paper copies of the survey will be used to mediate barriers to participation.

Engagement Approach

1. Municipal Council Presentations | Oct. – Nov. 2020

- Presentations will ensure all elected officials within the region are informed of the CSWB planning efforts.

2. Enhanced Sector Network | Oct. – Dec. 2020; Jan. – Jul. 2021

3. Online and Print Public Surveys | Feb. – Mar. 2021

4. Virtual Town Halls | Feb. – Mar. 2021

- Nine sessions will be conducted: 1 session per municipality; 2 sessions for the City of Windsor.

5. Virtual Focus Groups with CAOs and Elected Officials | Apr. 2021

Enhanced Sector Network Approach

Purpose

- To leverage existing strategies and leadership within Windsor and Essex County.
- To best inform the CSWB process and Regional Systems Leadership Table through the contextualization of community data from multiple population lenses.
- To ensure diverse voices from historically underrepresented communities are heard and priorities are woven throughout the planning process.

Structure

- The ESN will consist of eight (8) network groups. Each group will be comprised of representatives from existing committees and community organizations.

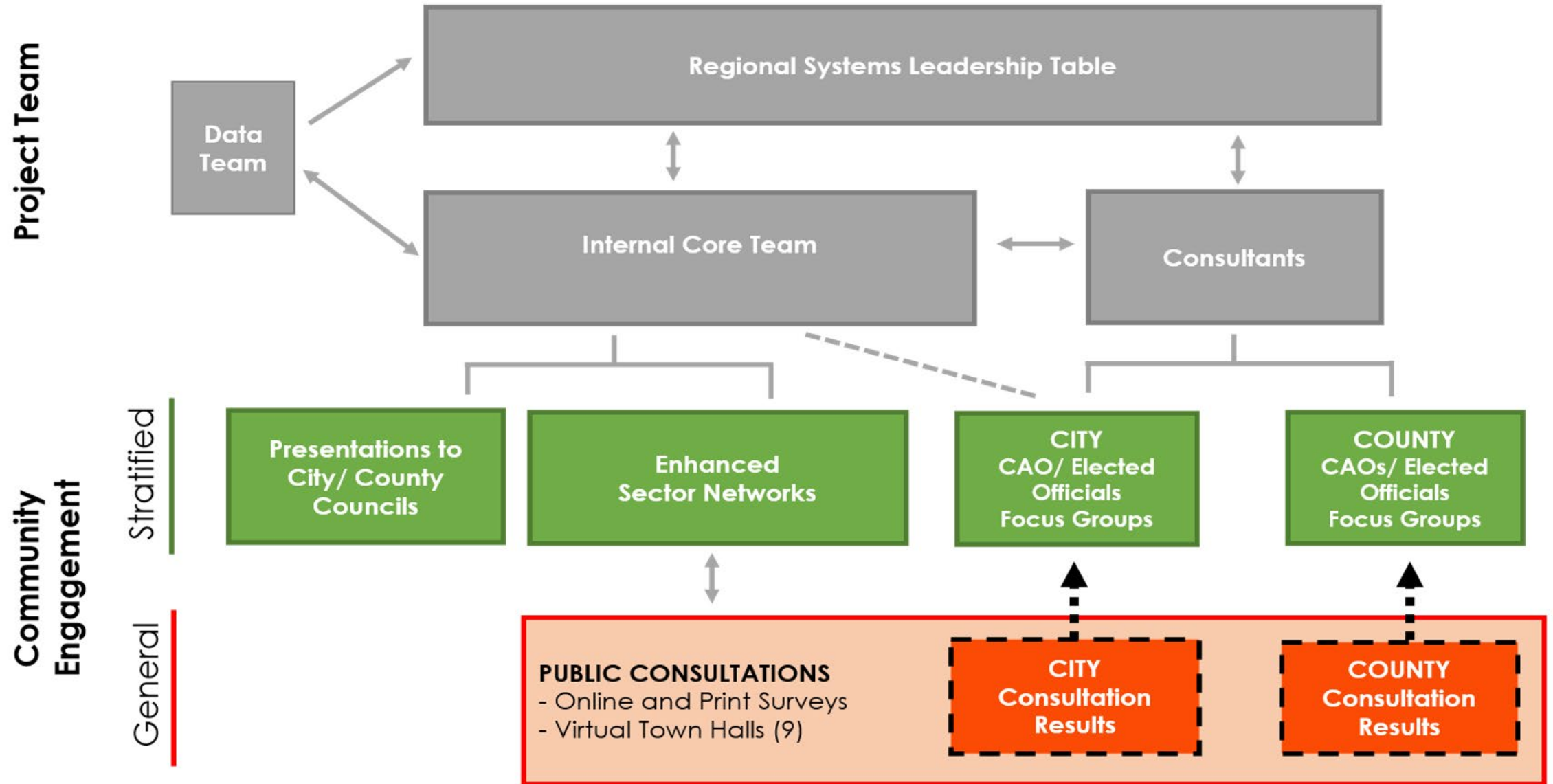
1. Indigenous Communities
2. Racialized Persons
3. Newcomers
4. Youth

5. Seniors
6. 2SLGBTQ+
7. Accessibility Communities
8. Broader Community Groups

Meetings

- Group members will be asked to participate in two (2) meetings over the course of the project.
- Meetings will involve qualitative activities piloted in previous community conversations as well as a prioritization process based on the results of public consultation data analyses.

Engagement Structure Overview



Regional CSWB Systems Leadership Table

Chairs

- City of Windsor, County of Essex, and Windsor Police Services

Membership

- County Fire Chiefs Representative
- Canadian Mental Health Association Windsor-Essex County
- Can-Am Indian Friendship Centre
- City of Windsor
- County of Essex
- Erie Shores Healthcare
- Erie St. Clair Local Health Integration Network
- Essex Windsor EMS
- Family Services Windsor Essex
- Greater Essex County District School Board
- Hôtel-Dieu Grace Health Care
- LaSalle Police
- Municipal CAO Representatives
- Ontario Provincial Police
- South Essex Community Council
- Southwest Detention Centre
- Southwest Ontario Aboriginal Health Access Centre
- St. Clair College
- University of Windsor
- Windsor Essex Catholic District School Board
- Windsor Essex Children's Aid Society
- Windsor Essex Community Health Centre
- Windsor Essex County Health Unit
- Windsor Essex Regional Chamber of Commerce
- Windsor Fire and Rescue Services
- Windsor Police Service
- Windsor Fire and Rescue Services
- Workforce Windsor Essex
- Youth Justice Division

Project Timeline

Estimated Project Timeframe

- June, 2020 – November, 2021 (16 months)

Factors Considered in Timeline Development

- Impact of COVID-19 on community and resident priorities
- Impact of COVID-19 on community assets as well as risk and protective factor data
- Need for greater diversity and inclusion in the planning process.
- Extended deadline advocacy through AMO and OMSSA
- Presumed extended deadline of Dec. 31, 2021

Key Milestones

- **Municipal Council Presentations:** October – November
- **Public Consultation Period:** February 1, 2021- March 12, 2021 (6 week consultation)
- **Report submission to City Council:** September, 2021
- **Report submission to County Council(s):** October – November 2021

Thank You



Leonardo Gil

Project Manager, Community Safety &
Well Being Plan

Social Policy & Planning Dept., CDHS



lgil@citywindsor.ca



519-255-5200 x 5432

DANKE!
THANK YOU!
MERCI!
GRAZIE!
GRACIAS!
DANK JE WEL!

.....