



**ESSEX COUNTY HIGHWAYS
BEST MANAGEMENT PRACTICE MANUAL**

CHAPTER: Traffic	Procedure No. ECH-R06-12	Page Number 1 of 2
SECTION: Speed Limits	EFFECTIVE DATE: August 4, 2006	

1.0 PURPOSE

To establish speed limits on County Roads.

2.0 REFERENCE

- 2.1 Highway Traffic Act. Chapter 198: Sec. 109
- 2.2 County of Essex By-Law 26-2002, as amended

3.0 DEFINITIONS

3.1 *Built-up Area*

The territory contiguous to a highway that is not within a city, town, village, or police village, where any one (1) or more of the following may occur:

- 50% of the frontage upon one (1) side of the highway is occupied by dwellings, buildings used for business purposes, schools, or churches, for a minimum distance of 200 m.
- 50% of the frontage upon both sides of the highway is occupied by dwellings, buildings used for business purposes, schools, or churches, for a minimum distance of 100 m, or;
- 200 m or less of the highway separates any territories described above.

4.0 POLICY

General

- 4.11 The County of Essex considers County Roads as highways connecting one urban area to another through a rural setting, and will therefore strive to maintain the highest appropriate rate of speed on all County Roads.
- 4.12 Sections of County Roads that are not within a city, town, village, police village, or a built-up area, will have posted speed limits of 80 km/h unless otherwise prescribed.
- 4.13 Sections of County Roads that are within a city, town, village, police village, or a built-up area, will have posted speed limits of 50 km/h unless otherwise prescribed.



**ESSEX COUNTY HIGHWAYS
BEST MANAGEMENT PRACTICE MANUAL**

CHAPTER: Traffic	Procedure No. ECH-R06-12	Page Number 2 of 2
SECTION: Speed Limits	EFFECTIVE DATE: August 4, 2006	

5.0 PROTOCOL

5.1 Speed Limit Changes

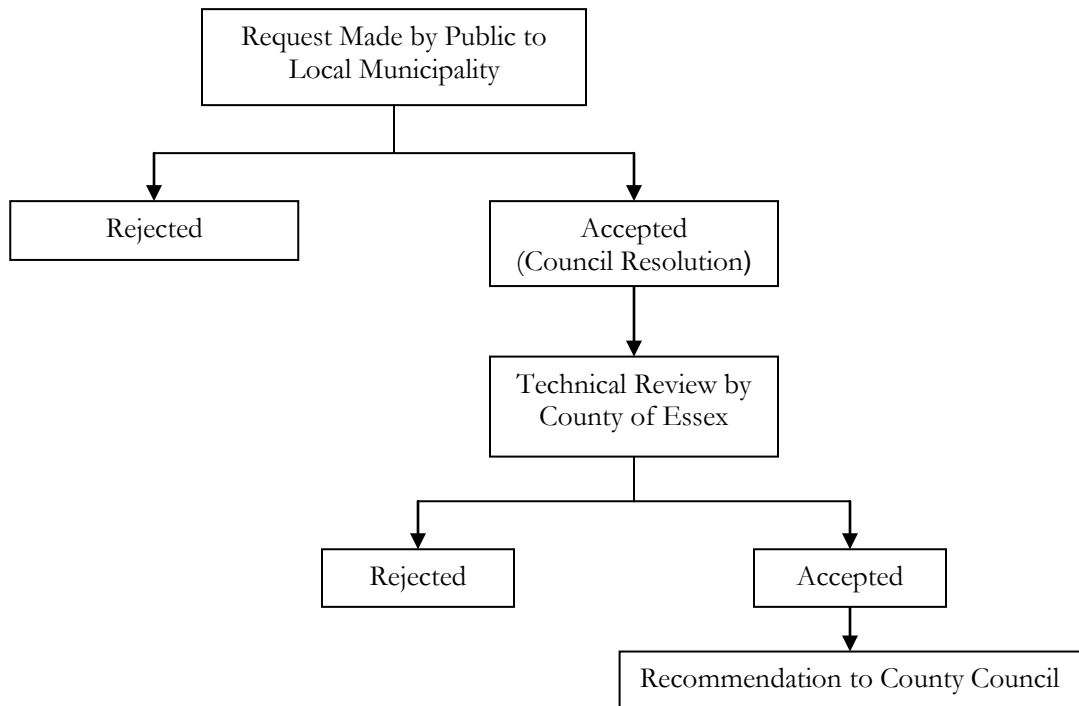
5.1.1 Speed limit changes will be handled according to Figure 6.12.1. The municipality in which section of County Road is geographically located having jurisdiction over the road in question must first approve/support requests made by the general public, through a formal resolution.

5.1.2 A technical review will be conducted by the County of Essex reviewing issues such as, but not limited to, the following:

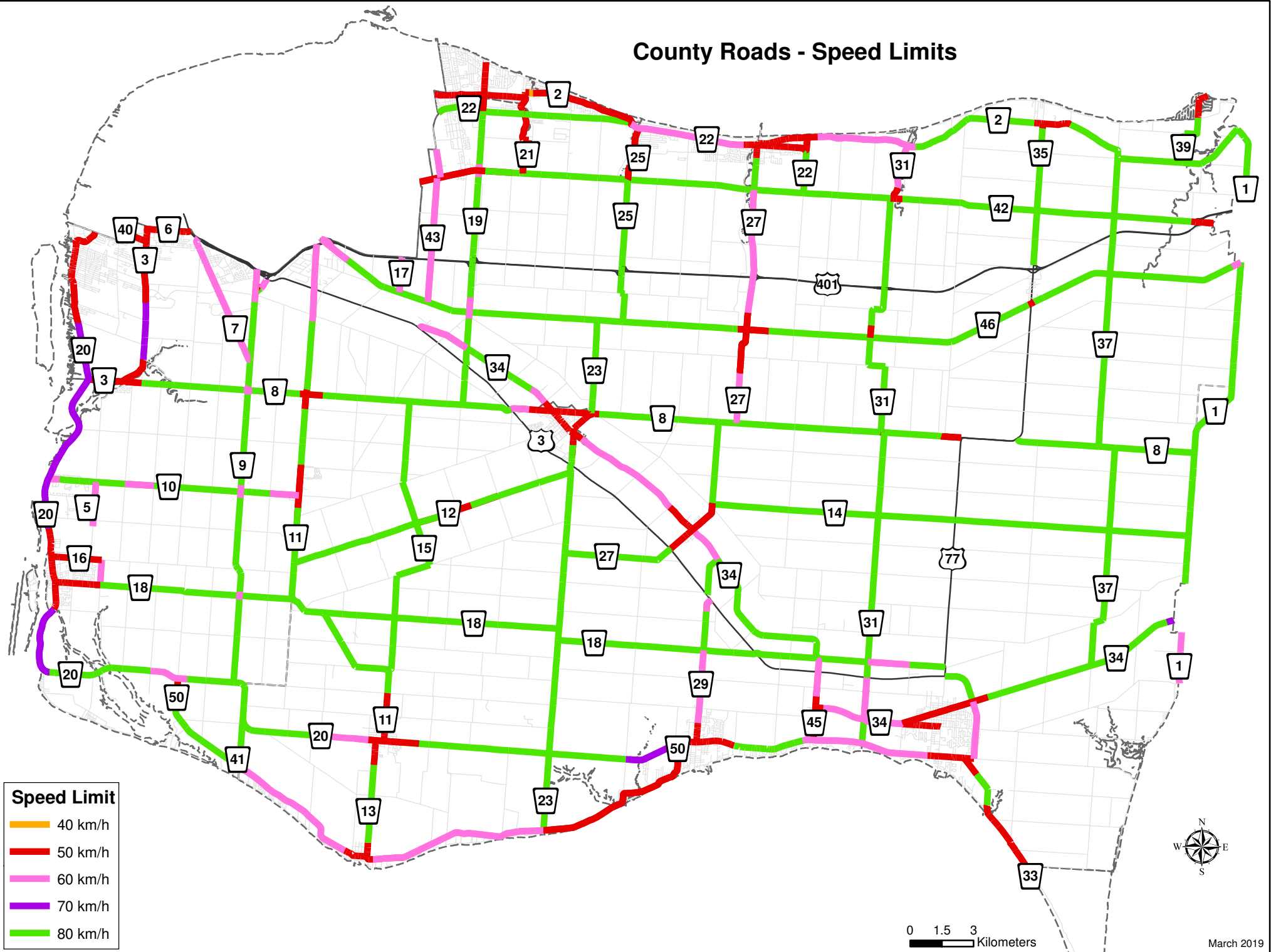
- Built-up 'area' criteria;
- Geometric Design;
- Traffic Volumes / Speeds;
- Traffic characteristics and composition;
- Motor Vehicle Accident (MVA) history.

5.1.3 Based on a technical review, the request will either be supported or rejected by the County of Essex.

Figure 6.12.1: Procedure for Handling Requests for Speed Limit Changes



County Roads - Speed Limits



Speed Limit

- 40 km/h
- 50 km/h
- 60 km/h
- 70 km/h
- 80 km/h

0 1.5 3 Kilometers

